

Expert Echo - Every Patient, Every Time.

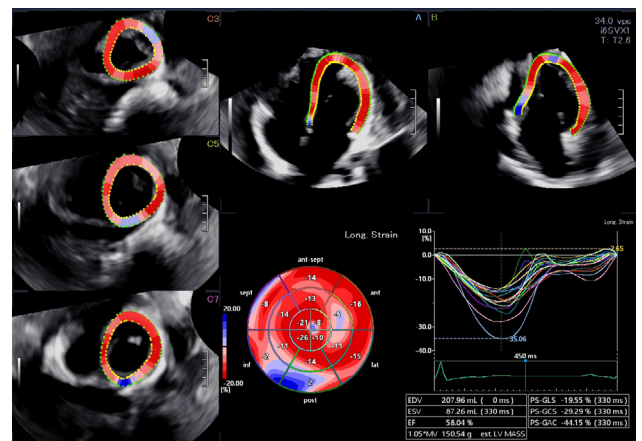
Every echo becomes a decision-making tool with Guardsman Scientific.



Guardsman Scientific elevates cardiovascular ultrasound by pairing Canon's industry-leading technology with clinician-driven expertise, protocols, and bedside support—ensuring Echocardiography continues to stand as the premium cardiac diagnostic tool.

Why Guardsman Scientific Matters:

- **Clinician-led protocols:** Reduce variability, improve confidence, and standardize exams across your lab.
- **Expert bedside support:** Continuous remote training, and exam-to-exam guidance.
- **Patient-first design:** Optimized for technically difficult patients and complex exams.
- **Workflow optimization:** Automated measurements, reporting, and *Healthy Sonographer Platforms™* reduce fatigue and increase speed.



AI empowered 3D LV Wall Motion Tracking

Key Clinical Advantages:

iBeam Technology

Aplio i-series offers exceptionally high image resolution for fast, confident, and efficient visual and quantitative assessment.

EChO: Easy Chamber Opacification

With the press of one button, activate Canon's new **EChO**: Easy Chamber Opacification and illuminate the borders of the heart with innovative SMI Doppler.

Protocols

Streamlined disease-specific protocols for heart failure, pulmonary hypertension, aortic stenosis, and more.

Technology, Capabilities & Specifications

Guardsman + Canon i-series i900 Prism Edition Technology Overview

1. Imaging & Processing Power

- GPU-based beamforming for improved image generation.
- Raw data acquisition enables advanced post-processing and analysis.
- Near-unlimited processing power allows upgradability for 2D/3D/4D, Doppler, and SMI modes.



All new 514VX 4D TEE

2. Transducers & Hardware

- Premium iDMS* and volume matrix transducers.
- Full range of cardiac-specific probes, including high penetration and high-frequency linear arrays.
- Minimal clinical disruption with fast-track probe replacement service.

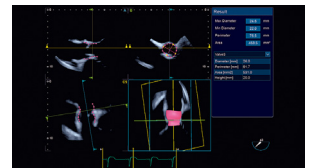


28VX All-In-One 2D/4D Transducer

*Intelligent Dynamic Micro-Slice

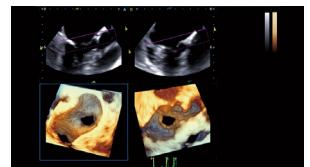
3. Workflow & Automation

- Built-in acquisition protocols align with imaging standards.
- Automated measurements designed to increase productivity and throughput, while maximizing clinical confidence in the busy echo lab.
- Protocols reduce inter- and intra-operator reader variability.



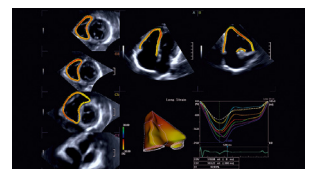
4. Sonographer-Centric Design

- **Healthy Sonographer Platforms™** adapt to the patient, user, and exam type to help sonographers scan more comfortably.
- Ergonomic interfaces and customizable controls.
- Real-time guidance and remote clinical coaching.



5. Clinical Impact & Applications

- High IQ and penetration designed for technically difficult patients.
- EChO: Easy Chamber Opacification to illuminate the borders of the heart.
- Disease-specific automated reporting increases consistency and speeds patient management.



Why Guardsman Scientific?

- Expert-driven solutions to elevate patient care and sonographer confidence.
- Technology, protocols, and bedside support combined in a single partnership.
- Continuous innovation informed by senior clinician input.
- Upgrade programs: Max Trade-In and Revenue Cycle.
- The Canon i-series i900 Prism Edition platform, fully optimized for cardiac ultrasound, powered by Guardsman Scientific expertise.



435.640.3502

GuardsmanScientific.com



VETERANS MEDICAL DISTRIBUTORS

561.588.3222

office@vmdinc.com

Experience the difference. Invite Guardsman Scientific and Canon into your lab today. See why expert-driven imaging changes everything—from exam speed to clinical confidence.